

Product Family	DX Apollo Rotating Climber
Product Number	DX-2100-F
Ages	5 to 12 years
Capacity	35
Size	D: 11' / 3.4 m H: 13' / 4.0 m
Use Zone	D: 23' / 7.0 m
Fall Height	10' 5" / 3.18 m
Shipping Weight	1981 lbs / 899 kg
Shipping Volume	168 ft <sup>3</sup> / 4.8 m <sup>3</sup>
Foundations	1
Concrete Volume	<b>No Concrete Required</b>

## Product Features:



**SUPPORT POST:** This will be 5 1/2" (139.8mm) OD schedule 40 galvanized steel pipe, mounted to a reinforced steel base with braces.

**ROTATION:** The central post will rotate along with all other parts of the play equipment in a way that prevents clothing entanglements or pinching.

**CENTRAL TUBING:** This will be 6 5/8" (168mm) OD schedule 10 stainless steel pipe finished with polyester powder coating.

**DECK RINGS:** These will be 2 7/8" (73mm) OD schedule 40 aluminum tubing finished with polyester powder coating.

**CLIMBING NETS:** These will be 20 mm diameter polyamide (nylon) rope cable with UV protection and fire retardant solution. Each rope consists of 6 strands each containing 24 steel reinforcing wires within a polyamide (nylon) braid, wrapped around a solid polyamide (nylon) core; each end of the cable having a stainless steel junction sleeve, and meeting the ring connectors with a two-piece manufactured stainless steel universal pivot.

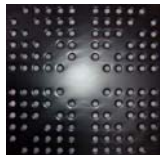


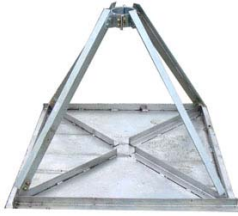
**BALL KNOTS:** These will be one-piece compressed aluminum ball, compressed in place with 150,000 pounds force (667 kN) to prevent the connection from moving and causing premature cable wear.

**BASIC FASTENERS:** All fasteners for deck and component attachments are stainless steel.

**BEARINGS:** This will be maintenance-free self-lubricating nylon, sealed and integrated into the central post, leaving no apparent mechanism.

**DECKING:** This will be constructed of 2" x 2" (50mm x 50mm) welded angle frame, 3/16" (5mm) thick. This will be custom cut 3/16" (5mm) thick punched steel decking dipped in PVC coating.





FOOT BASE:	This will be 4' x 4' (1220mm x 1220mm) galvanized steel plates, 3/16" (5mm) thick, reinforced with a frame of 2" x 2" (50mm x 50mm) galvanized angle steel, and attached to the support posts with 2" x 2" (50mm x 50mm) galvanized angle steel braces and buried under 4' 6" (1370mm) of fill mass for stability.
INSTALLATION:	This should be installed only by a NPSI, CPSI or equivalent certified installer. No concrete is required for the installation of this playground game.
COMPLIANT WITH:	<b>CAN/CSA-Z614-07</b> <b>ASTM F-1487-07a<sup>e1</sup></b> <b>EN-1176</b> <b>CPSC Handbook for Public Playground Safety</b>
CERTIFICATION:	To EN-1176: TÜV Rhineland Certificate No. AK50084826